



Welcome to SIDO

SIDO is a multi-nations and culture development organization with Cambodian, Australian and US-based Group of Founders and Funders who are committed to individualized, poor communities and long-term assistance to their beneficiaries, advocating and promoting the strategic use of the social enterprise model, with partly receiving external donors' assistance for its social development programs as a tool for social rehabilitation, self-reliance with its enabling sustainability and economic empowerment. SIDO works with poor communities and disadvantaged people in general, especially women and children from devastating backgrounds of violence, abuse, trafficking and who affected all types of social issues, and supports them in their recovery, rehabilitation, job readiness and ultimately community reintegration for a better in life through a variety of SIDO social development programs and its social enterprise involvement in Cambodia, Vietnam and Lao PDR.



SIDO originated in Cambodia with strong supports from our Group Founder and Funders from Cambodia, Australia and the States where it has been running social development programs and social enterprise model since 2007. In Cambodia, almost of our beneficiaries have been successfully reintegrated into group, the community and CBOs that those gained the job and way to live by own income.





Beyond Cambodia

In light of its achievements, SIDO is poised to launch its replication project and aiming at exploration wider program in Cambodia within 24 towns and provinces. In stages, SIDO will implement its model of social development programs to be complemented by commercially viable business activities in other two targeted countries namely Lao PDR and Vietnam. SIDO will introduce the innovative holistic 4R model as a working framework for our working partners such as LNGOs, local government and other institutions to increase and create capacity in providing recovery, rehabilitation, community reintegration, and job readiness programming in a way of self-reliance and sustainability of funding.



Role of SIDO to be fully Social Enterprises

In the innovative model of care developed by SIDO, the role of **commercially run SIDO Social Enterprises and Social Development Programs** are mainly to provide a **safe, supportive work environment** to poor communities and women who may have never worked in a formal work setting and are still recovering from their traumatic past.

With this regard, SIDO aims for **COMMUNITY REINTEGRATION** where all types of vulnerable and disadvantaged people and their communities, especially women and children gain their **independence**, are **economically empowered** and **self-reliance sustaining**.

To this end, SIDO Social Enterprises provide a stepping stone on the road from **Recovery Reintegration**.

In short, SIDO is in its process of Integration Development to Society by its own source and revenue and receiving external financial supports from various donors at the same skin.

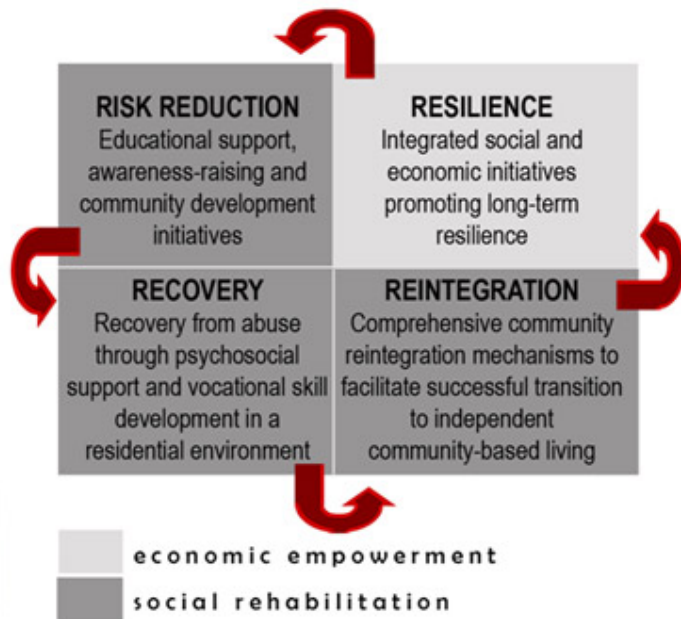


4R Model of SIDO

The 4R Model of SIDO represents its philosophy of a holistic approach to addressing the critical situations and needs of poor communities, especially women and children, working to improve an individual's quality of life, and helping to ensure that long-term solutions are found for the betterment of society in the future. It is also recognized that to be rich as for all in the society by individual's try ness.

This 4 R Model will be impacted by the two of Social Enterprise and Social Development Programs of SIDO's innovative decade strategy approach.

RISK REDUCTION	Educational support, awareness-raising and community development initiatives
RECOVERY	Recovery from abuse through psychosocial support and vocational skill development in a residential environment
REINTEGRATION	Comprehensive community reintegration mechanisms to facilitate successful transition to independent community-based living
RESILIENCE	Integrated social and economic initiatives promoting long-term resilience



The Findings of SIDO Development Program:

1. SIDO approach is thus a comprehensive one of individualized social development programs and social enterprises reaching to its self income generation.
2. Economic empowerment is necessary to reduce the risk of being re-trafficked
3. More than just lack of access to jobs or having low literacy and numeric skills, one of the major barriers faced by SIDO beneficiaries result from being severely traumatized.
4. With the majority without formal work experience, beneficiaries lack soft skills which enable the smooth transition into a formal work environment.
5. Ongoing support and follow-up (for at least 2 years) to facilitate reintegration to the community and long-term resilience.
6. Vocational training for jobs with transferable skills and opportunity for job advancement is critical.
7. A job placement vehicle which provides a living wage and benefits (especially for single mothers) and that allows for ongoing access to support (e.g. psychosocial counseling and skills upgrading) is an important part of the process.